

NO T-shirts, graphic shirts or pajama style pants to be worn in any classes  
 Hair must be secured in a bun for all ballet classes and properly secure up for all other classes

**Creative Moment, Tiny Tots, Little Movers**

**Body:** Leotard (dancer's choice)  
**Legs:** Pink convertible tights (no Capri or ankle length tights)  
**Feet:** Pink ballet slippers (Canvas or leather ok, no satin shoes)  
**Hair:** Pulled back away from the face



**Ballet & Combo**

**Body:** Black Leotard  
**Legs:** Pink Convertible Tights (no Capri or ankle length tights)  
**Feet:** Pink ballet slippers (canvas preferred), Black tap shoes – COMBO only



**Jazz**

**Body:** Solid color leotard and/or tight fitted solid colored tank top  
**Legs:** Black or tan convertible tights, or tight black capri pants, biker or booty shorts  
**Feet:** Nude/Skin tone Apolla Performance shocks



**Tap**

**Body:** Solid color Leotard and/or tight fitted solid colored tank top  
**Legs:** Black or tan convertible tights, or tight black capri pants, biker or booty shorts  
**Feet:** Black lace up leather tap shoes  
**Hair:** Pulled back away from the face in ponytail. No bangs in the face



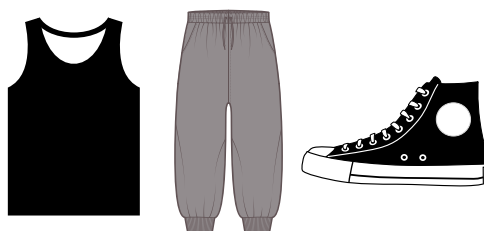
**Modern, Lyrical, Acro**

**Body:** Solid color Leotard and/or tight fitted solid colored tank top (no graphics)  
**Legs:** Footless black or tan tights, or tight black capri pants, biker or booty shorts  
**Feet:** Apolla tan or black dance shocks (Amp, Performance or Infinite) for Modern and Lyrical, No shoes for Acro  
**Hair:** Pulled back away from the face in ponytail. No bangs in the face



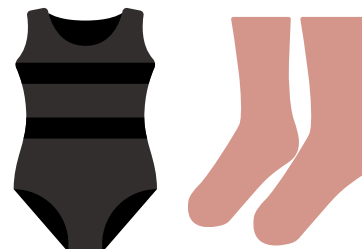
**Hip Hop**

**Body:** Danceable clothing – NO short shorts or jeans  
**Feet:** Street sneakers\*  
**\*NO BLACK SOLES and these shoes must be used only for Hip Hop class. For hygiene purposes shoes worn outside will not be allowed on the dance floor.**



**Musical Theater**

**Body:** Solid colored leotard, dance shorts optional  
**Legs:** Tan convertible tights  
**Feet:** Nude Apolla Performance shocks & Black character shoes (MT 2 only)  
**Hair:** Pulled back away from the face in a ponytail



**Adult Classes**

**Body:** Moveable, danceable clothing – Traditional dancewear or athletic wear  
**Legs:** Dancer's choice  
**Feet:** Ballet – Pink ballet slippers, Tap – Tan or black tap shoes, Jazz – Tan jazz shoes or Apolla shocks (NO black shoes)  
**Hair:** Pulled back away from the face in a ponytail



NO T-shirts, graphic shirts or pajama style pants to be worn in any classes  
 Hair must be secured in a bun for all ballet classes and properly secure up for all other classes

**Creative Moment, Tiny Tots, Little Movers**

**Body:** T-shirt (dancer's choice) and black shorts  
**Feet:** Black ballet slippers



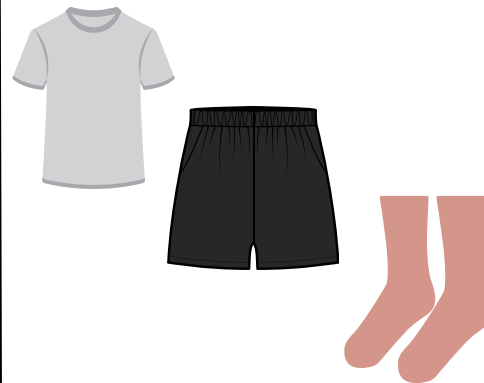
**Ballet & Combo**

**Body:** White tight fitting tank top or t-shirt  
**Legs:** Black male tights and/or black basketball shorts  
**Feet:** Black ballet slippers (Canvas preferred)



**Jazz**

Solid tight fitting tank top or shirt  
 Gym shorts  
**Feet:** Nude Apolla Performance shocks – Select nude color closest to skin tone



**Tap**

Solid tight fitting tank top or shirt  
 Gym shorts  
 Black lace up tap shoes



**Modern, Lyrical, Acro**

**Body:** Solid color tight fitted tank top or shirt  
**Legs:** Black male tights and/or black loose fitting Capri pants and/or black shorts  
**Feet:** Nude Apolla Performance shocks. No shoes for Acro



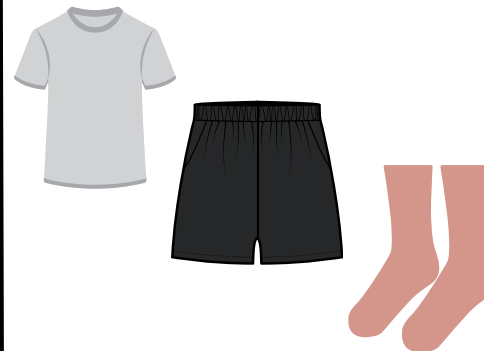
**Hip Hop**

**Body:** Danceable clothing – NO short shorts or jeans  
**Feet:** Street sneakers\*  
**\*NO BLACK SOLES and these shoes must be used only for Hip Hop class. For hygiene purposes shoes worn outside will not be allowed on the dance floor.**



**Musical Theater**

**Body:** Solid color tight fitted tank top or shirt  
**Legs:** Black male tights and/or loose fitting Capri pants and/or shorts  
**Feet:** Nude Apolla Performance shocks & Black character shoes (MT 2 only)



**Adult Classes**

**Body:** Moveable, danceable clothing – Traditional dancewear or athletic wear  
**Legs:** Dancer's choice  
**Feet:** Ballet – Pink ballet slippers, Tap – Tan or black tap shoes, Jazz – Tan jazz shoes or Apolla shocks (NO black shoes)  
**Hair:** Pulled back away from the face in a ponytail

